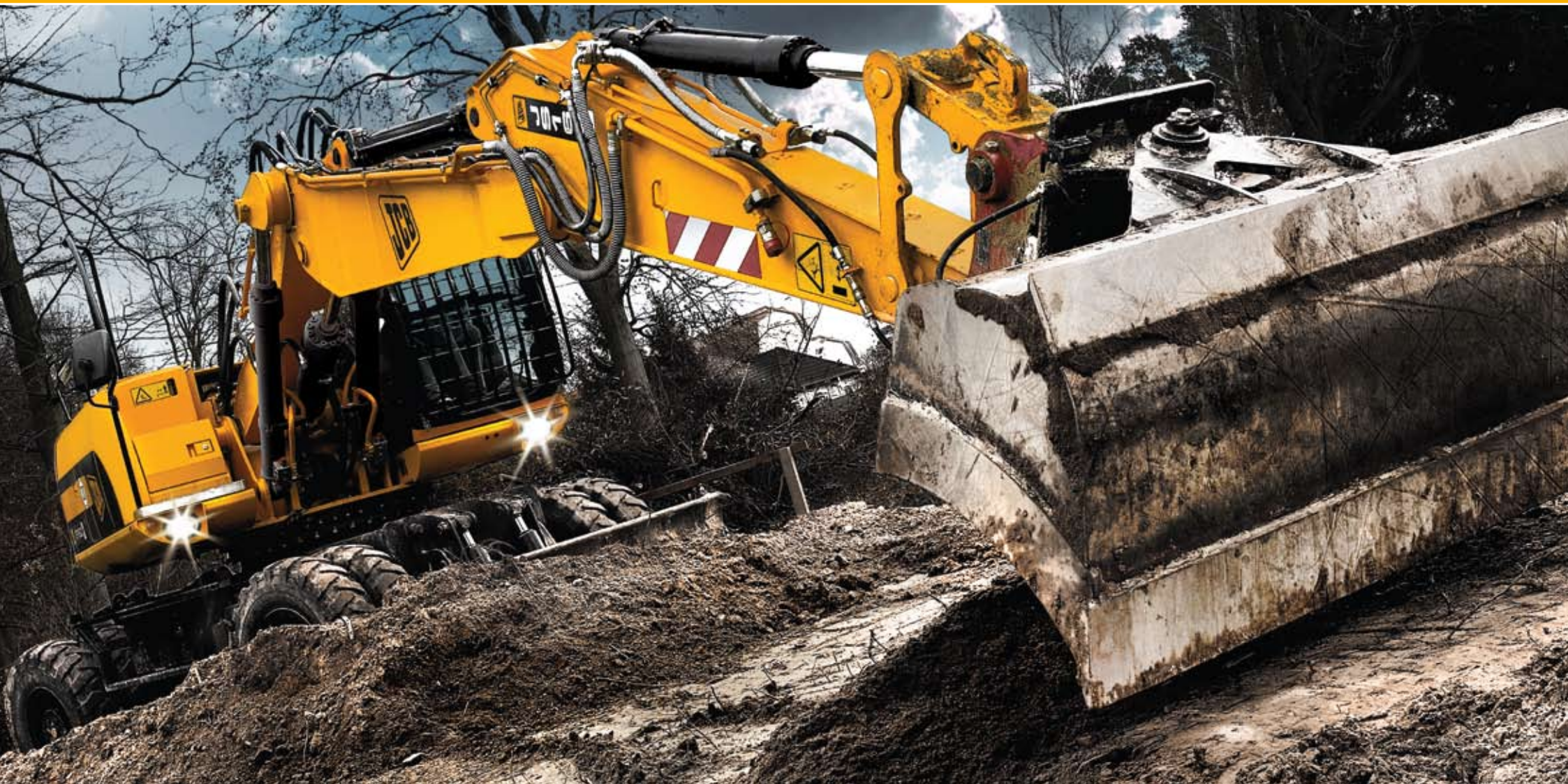


# WHEELED EXCAVATOR



A Product of Hard Work





## **A machine for every task**

From road preparation and repairs, and rehandling tasks in stock yards, to the tough demands of hire companies where a machine may be required as fast as possible in another location ... all have one thing in common: they need reliable productivity and durability combined with the ability to travel independently on roads.

No one understands this more than JCB. That's why every machine in our JS wheeled excavator range provides the specific performance you need to get the job done, as well as road speeds of up to 30kph.

## MANOEUVRABLE AND EFFICIENT PRODUCTIVITY



There are five machines in the JCB wheeled range: the JS130W, 145W, 160W, 175W and 200W. All feature the same powerful Isuzu engines you will find on our tracked range, and with the JS145W and 175W, we have retained the compact sizes of the 130W and 160W but introduced bigger engines to provide higher travel speeds. Also available in the JSW range is the JS200W Wastemaster, available with optional hydraulic-raise cab and a choice of material-handling or scrap-handling booms and arms. There is no doubt that these are some of the most popular wheeled excavators on the market. Why?

It's simple: they are among the best excavators we have ever built. Powerful and fuel efficient for high performance and low running costs, durable for good resale, comfortable for excellent productivity, and reliable and easy to service for minimum downtime. Plus, advanced technology controls how much power you need and tells you when something is wrong.

Our customers tell us these are among the most advanced hydraulic excavators ever... and our customers are never wrong.

# Pure productivity

Turbocharged Isuzu Tier 3 engines are quiet, powerful, reliable, durable and highly fuel efficient

Increased hydraulic flow makes machine operation faster

More dipper force, drawbar pull and bucket dig force enhance performance

Boom/slew priority as standard speeds up truck loading

Flexible chassis options let you tailor the machine for optimum stability and manoeuvrability



Every machine in the latest JS wheeled series is designed to give you the incredible productivity you would expect of a tracked excavator, combined with the reduced surface damage of a wheeled model, with travel speeds of up to 30kph and one of the tightest turning circles in this class.

All machines in the range feature Isuzu turbocharged engines, renowned throughout the world for power, reliability, durability and fuel efficiency, with low noise and exhaust gas emissions.

Meanwhile, the Japanese main hydraulic components give you increased flow and pressure, which in turn increase available power and speed for improved dipper and bucket dig force, drawbar pull and work equipment speeds. It's also a regenerative system where oil is recycled resulting in faster cycle times and lower fuel consumption.

Moving on to the chassis, it's all about giving you flexible options to suit the task in hand. So you can choose from the following configurations: all wheels, wheels plus a dozer blade on the front or back, dozer blade plus two outriggers on the front or back, or four outriggers. This allows you to tailor the machine to give you both the stability and the manoeuvrability you require. There is also a range of tyre options, including pneumatic for comfortable road travel, and foam filled or solid for additional puncture protection and durability.

But that's not all. Thanks to an enhanced Advanced Management System (AMS), these machines also put you in total control. This intelligent on-board computer is in charge of all the major functions, automatically giving you that extra power and precision just when you need it, while optimising fuel efficiency.

With impressive lifting capability coupled with exceptional stability, these machines give you superb productivity along with the fine control you need for accurate and safe operation.





# Complete controllability

AMS ensures maximum productivity at minimum operating cost

Four selectable work modes give ultimate operating efficiency

Increased diagnostics (no PC required) make servicing easier

A full record of machine history aids resale

Cushion control protects the machine and enhances operator comfort



All new generation wheeled JS cabs boast ergonomic layout and controls. To make controlling the incredible potential of these machines even easier, we have also introduced an enhanced Advanced Management System (AMS) as standard on all models.

This intelligent but easy-to-use piece of equipment controls all the machine's major functions for maximum productivity and fuel efficiency, and minimum operating costs. A compact design with an anti-glare screen and clear, easy-to-use interface, the AMS has four operating modes:

- **Auto** automatically switches between maximum power and economy depending on hydraulic system loading
- **Economy** gives you maximum fuel efficiency in normal digging conditions by reducing hydraulic pressure, hydraulic flow and engine rpm
- **Precision** further reduces hydraulic flow and engine rpm giving you more control and accuracy for fine work and grading
- **Lifting** gives maximum power with reduced oil flow for controllability

The AMS also alerts you immediately if there's a problem and records all the machine's key operating data: the time it has spent in each mode, attachment hours used, roading time, and much more. What you get is a picture of the machine's use that can be used to diagnose problems as well as a machine history that is invaluable when it comes to resale.

In addition to AMS, every wheeled excavator also features cushion control to the boom and dipper services. It works to cushion the shock loadings to the machine (protecting your investment) and the operator (making life more comfortable), and results in reduced cycle times.





# A machine for every application

JS200W Wastemaster offers a choice of standard boom and arm configuration, TAB booms or specialist material/scrap handling configurations

JS200W available with hydraulic raised cab offering fantastic loadover visibility

All JS wheeled excavators offer real precision earth moving for preparing sites for foundations

Compact, robust design and precise performance give incredible productivity in many applications

All JS wheeled excavators are easy to use, safe and versatile, with superb all-round visibility



There are five models in the JS wheeled excavator range, with several chassis options and work equipment, so it comes as no surprise that JCB can supply the perfect excavator for virtually any task.

Take the waste and recycling industries. They are looking for the high, consistent productivity, superb durability and excellent fuel efficiency offered by our JS wheeled machines. For instance, the JS200W Wastemaster offers fast, efficient cycle times, expected uptime of around 98% and a robust chassis and axles. And the option of scrap or material handling booms and dippers provide a solution to all operating tasks.

When it comes to house building and general contracting, it's more about ease of use so that different operators can quickly get to grips with the controls; a good compact design for manoeuvrability in increasingly restricted sites; and versatility, with machines being required to carry, dig, grade, load and lift.

A large part of construction and civil engineering projects involves preparing sites for laying foundations. This requires real precision earth moving and means drafting in excavators that offer superb controllability and visibility. All JS wheeled excavators are ideally suited to the task, with: increased hydraulic flow and power for improved attachment performance and production cycle times, and effortless manoeuvring in tough terrain; and AMS (Advanced Management System) for added precision and power when you need it. Plus, all-round visibility is excellent so you always have the clearest view of the site and your colleagues.

JCB wheeled excavators are also excellent options for general materials handling. All offer the high reach you need to load and unload trucks, and are designed to give you the maximum possible travel speeds, both on site and between sites.

From house building and civil engineering, to highway and rail construction and maintenance, the five JCB JS Auto wheeled machines offer versatile, reliable and extremely productive performance.





# Comfort and visibility

Controls positioned within easy reach result in effortless operation

Fully adjustable AMS monitor, seat and joysticks give the best working position

Enhanced climate control at your fingertips

Low-level engine cover and modern styling significantly improve visibility

Sliding both front screens overhead avoids damage



When we developed the new generation JS/JZ tracked range we introduced our best cab yet. The good news is our wheeled models feature the same excellent design.

Extremely spacious with a sleek, comfortable interior design, all the ergonomically designed controls fall within easy reach. To allow every operator to find their ideal position for fatigue-free working, we have also ensured that the upgraded suspension seat and AMS monitor are fully adjustable.

By viscous mounting the whole cab structure, we have been able to reduce noise and vibration levels. The positive-pressure design with ventilation system reduces dust ingress. Plus, enhanced heating, optional climate control and opening front and side windows let you achieve the optimum cab temperature, whatever the weather.

We have also thought about all the essential extras that make your working life a bit easier. So there's a radio mute switch, a timed interior light you can switch on from ground level for access in the dark, an easy-close door, phone holder and charger, plenty of storage space and much more.

These amazing machines go a long way to reducing the stress and fatigue that come with the territory. But, thanks to incredible all-round visibility, they also make it easier and safer to do the job.

With large tinted glass areas on all sides, there is a clear view overhead, enhanced by the clever positioning of the wiper motor, and to both front wheels, particularly to the edge of the front right wheel. To the rear, the new low-level engine cover gives excellent visibility and to the front you can securely store the lower screen inside the upper one before effortlessly sliding the whole lot overhead.





# Build quality, service access and profit

Modern design reduces risk of damage to superstructure

1000-hour greasing intervals on boom-base and boom-to-dipper pins reduces service time and costs

Cushion control ensures smooth operation and reduces wear and tear

Isuzu and AMS maximise productivity while keeping fuel consumption to a minimum

Enhanced access throughout makes field maintenance much easier and quicker for minimum down-time



Whether it's arduous digging work on the roads, or protected performance in waste environments, JCB wheeled excavators are designed to cost you less while making you more.

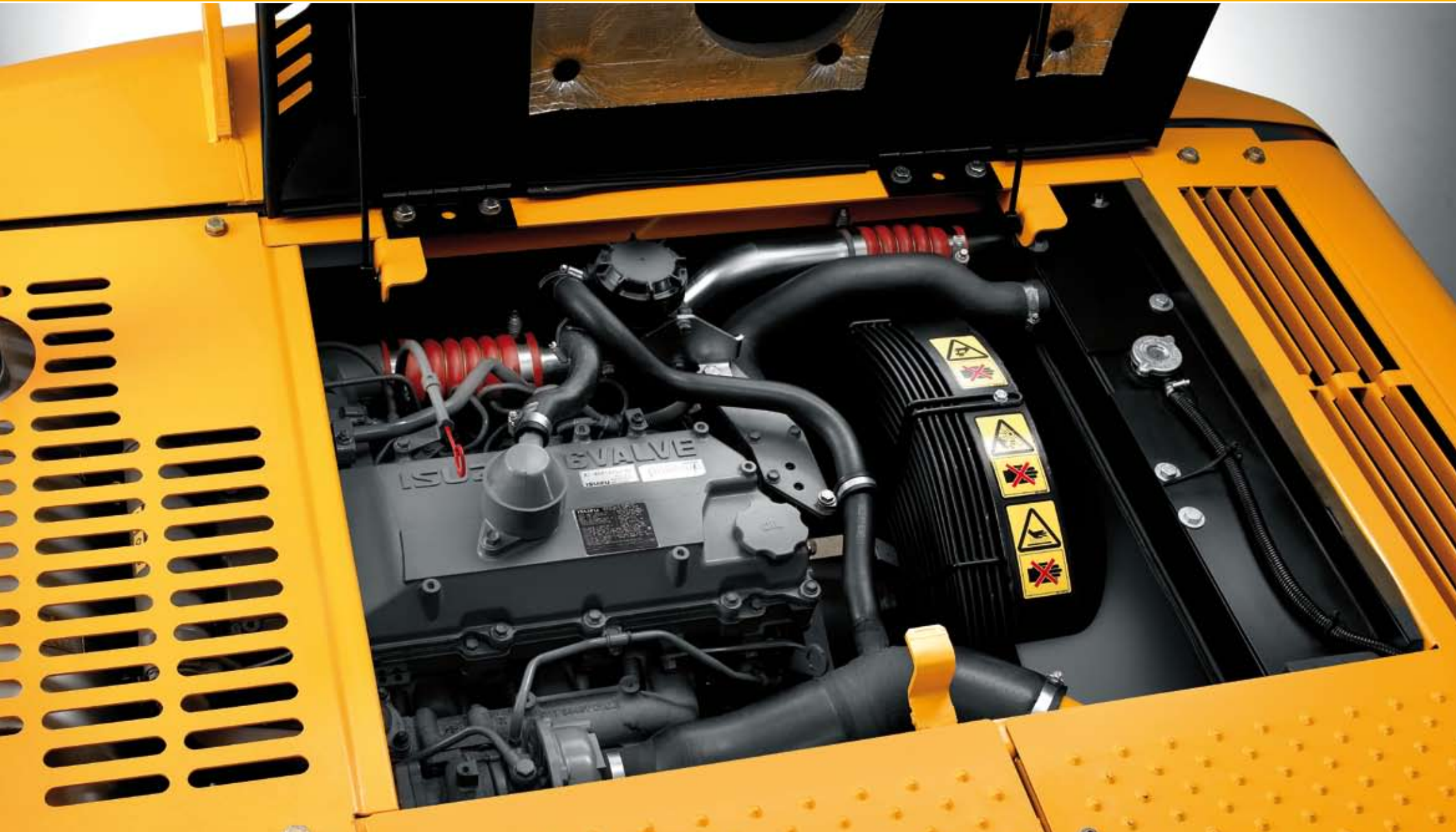
So first, these machines come with superb damage protection as standard: curved side skirts and a big clearance over the wheels reduce damage to the superstructure; guards shield the chassis from debris; and cushion control on boom and dipper services reduces wear and tear on machine parts at the same time as making things more comfortable for the operator. The JS200W Wastemaster also features screen guards and an engine pre-cleaner system to cope with additional hazards and airborne debris.

Next, we have paid close attention to reducing the cost of running and servicing these machines. You'll find that the new Isuzu engine and AMS mean you can move more material for less fuel, your first engine oil and filter service is at 500 hours, we've moved greasing intervals on boom-base and boom-to-dipper pins from 50 to 1000 hours, and there is a single-engine oil filter instead of two. In addition, while you don't need a laptop to service the JS wheeled machines, you can download the operating history from the AMS when you need it to make your service engineer's life easier.

And finally, service access is a whole lot better too. A hinged belly plate makes getting to the engine sump much simpler and there is a quick-fit drain pipe for use on engine-oil and fuel-tank drain plugs. All the steps and top covers are fitted with non-slip, heavy-duty panels, you can get to the coolant top-up bottle from ground level and engine-oil level is AMS displayed. When you look inside the bays, you'll see the finish is extremely high quality, there's plenty of space and it's well laid out for easy access to serviceable parts.

Reliable, economical and durable, these machines make you more profit on each job and give you a higher resale value... if you can bear to part with them.





## Excavator

- 1000-hour greasing on boom base and dipper pins
- Boom, dipper and bucket hydraulic regeneration circuits
- Short, medium and long dipper options
- Triple-articulated-boom (TAB) option available

## Hydraulics

- Proven reliability of Japanese components
- Efficient proportional flow to lever movement for greater control
- Plexus filter system
- Regenerative circuits, increased ram speed and better flow efficiency
- Cushion control on boom and dipper as standard

## External noise level reduced

- Variable-speed cooling fan for a quicker warm up
- Noise levels reduced to 102db, cooling fan only runs as required
- Single-face cooling pack for increased efficiency, slower fan speed and reduced noise





### **Cab and controls**

- Excellent all-round visibility
- Gas-strut-assisted front window
- AMS (Automatic Management System)
- Servo excavator controls
- Plenty of air-cooled storage space

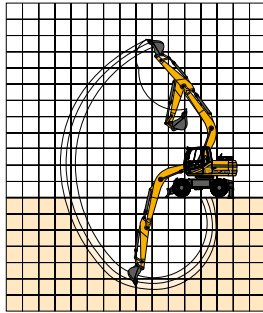
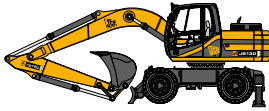
### **Superstructure**

- Easy access to all components
- Low bonnet line for excellent visibility
- Perforated plate steel walkways
- Prominent customer signage area
- Curved side skirts and a big clearance over the wheels reduces risk of damage to the superstructure

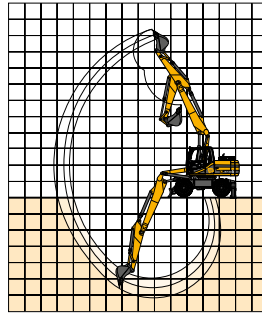
### **Undercarriage**

- Large diameter slew ring and turret
- Large recovery point at front and rear
- Independent or simultaneous deployment of outrigger and blade
- Option of traction or endurance tyre patterns

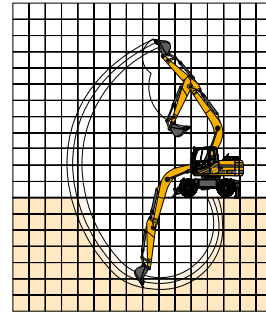
JSI30W



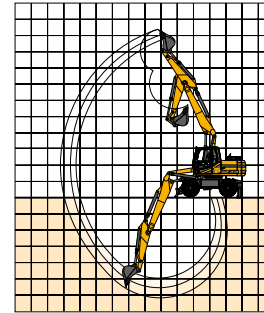
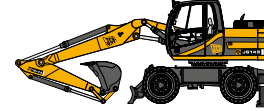
JSI30W TAB



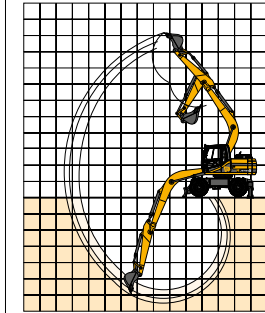
JSI45W



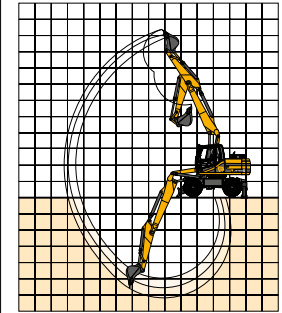
JSI45W TAB



JSI60W



JSI60W TAB



Operating weight	kg (lb)	14460 (31880)	14960 (32980)	14645 (32290)	15145 (33390)	17320 (38184)	17820 (39286)
Gross power	kW (hp)	73 (98)	73 (98)	92 (123)	92 (123)	92 (123)	92 (123)
Max. dig depth	mm (ft-in)	5675 (18-7)	5930 (19-6)	5675 (18-7)	5930 (19-6)	6451 (21-2)	6100 (20-0)
Max reach at ground level	mm (ft-in)	8585 (28-2)	9000 (29-6)	8585 (28-2)	9000 (29-6)	9163 (30-1)	9195 (30-1)
Max loadover height	mm (ft-in)	7400 (24-3)	7950 (26-1)	7400 (24-3)	7950 (26-1)	7174 (23-6)	7575 (24-9)
Travel speed (high)	km/h (mph)	30 (19)	30 (19)	30 (19)	30 (19)	30 (19)	30 (19)
Slew speed	rpm	13.4	13.4	13.4	13.4	11.3	11.3
Max bucket capacity (SAE heaped)	m <sup>3</sup> (yd <sup>3</sup> )	0.80 (1.05)	0.80 (1.05)	0.80 (1.05)	0.80 (1.05)	0.90 (1.18)	0.90 (1.18)

JS175W

JS175W TAB

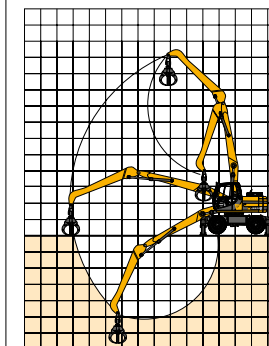
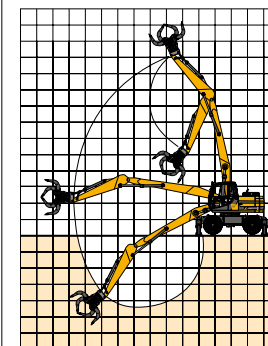
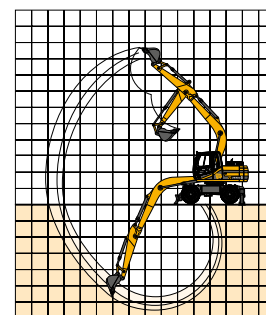
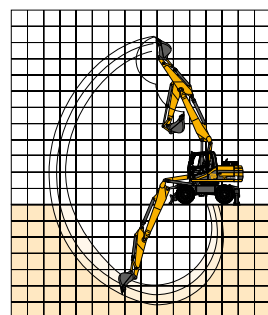
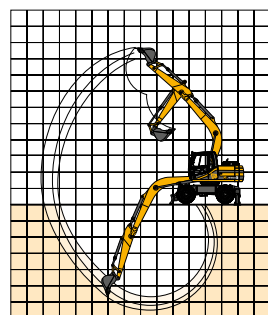
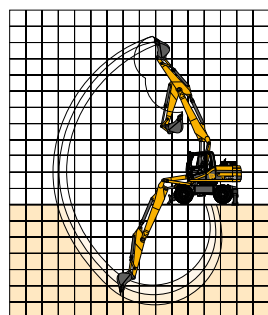
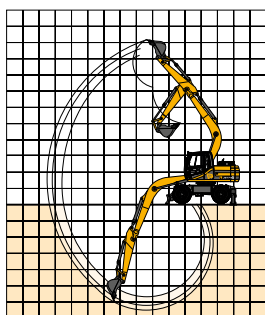
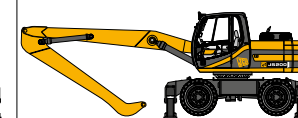
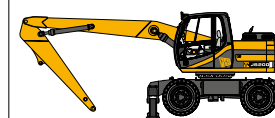
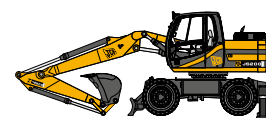
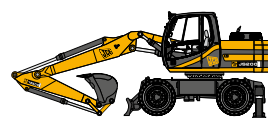
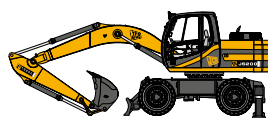
JS200W

JS200W TAB

JS200W WASTEMASTER

JS200W WASTEMASTER MH

JS200W WASTEMASTER SH



17520 (38625)	18120 (39948)	22809 (50285)	23174 (51089)	22809 (50285)	24655 (54355)	24758 (54582)
128 (172)	128 (172)	128 (172)	128 (172)	128 (172)	128 (172)	128 (172)
6451 (21-2)	6100 (20-0)	6370 (20-10)	6475 (21-3)	6370 (20-10)	n/a	n/a
9163 (30-1)	9195 (30-1)	9850 (32-3)	9650 (31-8)	9850 (32-3)	10250 (33-7)	11000 (36-1)
7174 (23-6)	7575 (24-9)	6980 (23-0)	7300 (24-0)	6980 (23-0)	12000 (39-4)	12250 (40-2)
30 (19)	30 (19)	30 (19)	30 (19)	30 (19)	30 (19)	30 (19)
11.3	11.3	10	10	10	6	6
0.90 (1.18)	0.90 (1.18)	1.19 (1.56)	1.19 (1.56)	1.19 (1.56)	n/a	n/a



### MECHANICAL QUICKHITCH

Screw locking mechanism complete with lock plate cover over the screw head

Owner's manual and appropriate safety certificate offers additional peace of mind



### MPG QUICKHITCH

Hydraulic operation from within the cab makes the MPG easy to use

Hydraulic check valve and manual locking pin ensure additional safety

Allows bucket mounting in face shovel mode



### BUG QUICKHITCH

Full hydraulic operation from within the cab makes the bug easy to use

Hydraulic check valve and automatic locking device ensure additional safety

Allows bucket mounting in face shovel mode



### BUCKETS

Optimum tooth spacing provides maximum protection of the toeplate and improves penetration

Additional horizontal wear strips add strength and extend bucket life in hard and abrasive materials

Weld in sidecutters improves strength and durability, increasing bucket life

Choice of wearparts available



### HEAVY-DUTY BUCKETS

Additional weld in Esco sidecutters assist breakout force protecting the bucket shell and extending bucket life

Two-part Esco tooth system selected to optimise digging performance

Side shrouds provide added protection for the bucket shell, extending bucket life

Double-skinned shell increases bucket life and side-plate reinforcements give strength and rigidity



### SCOOP BUCKETS

General purpose, heavy-duty and extra heavy-duty models available

Higher productivity from 100% fill factor design

Class-leading tearout force from low-profile design and sunken pins

No interference with machines' boom or cab



### HAMMERMASTER

Hard-hitting range with long piston stroke for increased breaking performance

Auto-stop function ensures no damage to the breaker from idle blows

Energy recovery gives enhanced performance

JCB Autogrease fitted as standard

Durable housing incorporates heavy-duty rock claw



### SELECTOR GRAB

Ideal for waste management, recycling and demolition duties

Fully protected hydraulic cylinders and motor and guarded hoses for operating in tough environments

High clamping force and wide opening gives safe and easy handling of awkward, heavy materials

Reversible bolt-on cutting edges



## A few words about JCB

A groundbreaking, class-leading family business with a commitment to supporting our customers and protecting the environment



**A family company on a global scale.** JCB is no ordinary company. From the dreams of one man, Joseph Cyril Bamford, we have grown into the world's biggest privately owned construction company by volume. Since 1945, the same attention to detail, passion for progress and family spirit has taken us from strength to strength.

Nowadays JCB operates across all five continents, manufacturing at 17 factories in the UK, Brazil, Germany, China, North America and India. With 1,500 dealerships and depots selling and supporting our products in over 150 countries, we are one of the top three manufacturers of construction equipment with some of the finest engineering facilities in the world.

**A history of world-class innovation.** Our business has always been driven by innovation, using only the most advanced technology, components and processes, meticulous design and rigorous testing. In heavy products this has meant one of our largest investments to date, £40 million, into a new factory dedicated to producing large excavators. Here, with a team of industry experts and machine specialists, we're designing and developing the heavy machinery of the future.



**Sustainability in all we do.** As a manufacturer of working machinery, operating in both established and emerging markets, we accept the challenge of helping to deliver economic and environmental sustainability. Product innovations that provide the right solutions to our customers have been a vital part of our history and will be key to our sustainable future. But in addition to developing cleaner and more efficient machines, we have a commitment to ensuring our manufacturing facilities meet the highest environmental standards.

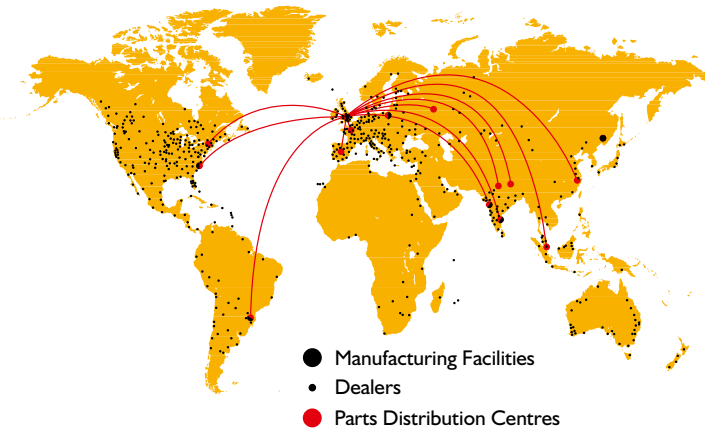
**A commitment to our customers that goes on and on.** That's a fact we remind ourselves of constantly, and it's the reason our customers are at the heart of everything we do. Whatever a customer needs, we make it our mission to provide world-class support and 100% satisfaction.

At the heart of this is a dedication to minimising machine downtime. So our state-of-the-art World Parts Centre dispatches more than a million genuine parts and attachments every week, with an 'Anywhere in 24 hours' strategy. Our JCB-trained technicians provide excellent, expert customer care, whether it's routine servicing or something more urgent. And we are constantly looking at new, innovative ways to help you get the most out of your machine.



## The best back-up in the business

Whether we're providing you with support, parts or finance, we aim for 100% satisfaction. It's all part of our promise to put you, the customer, first



**Wherever you are, we are.** Our mission to provide world-class support and deliver 100% satisfaction reaches into more than 1,500 dealer depots, spanning 150 countries across five continents. The aim? To bring you global expertise at a local level. We truly believe no other manufacturer does more to understand the subtle differences between one region of the world and another. It's a degree of attention that we maintain at every level of the company and an assurance to our customers that wherever they are in the world, JCB will fulfil their needs.

**Trust the genuine article.** At the heart of the support network is our impressive World Parts Centre, a state-of-the-art facility operating 24/7 to dispatch more than a million genuine parts and attachments every week to our dealers and international distribution centres. Because we understand the need to minimise downtime, we utilise the latest logistics and warehouse management systems and have committed to an 'Anywhere in 24 hours' strategy.

**Keeping you up and running.** Just as important as genuine JCB parts are the people who fit and maintain them. Our JCB-trained technicians in all of those 1,500-plus dealer depots provide excellent, expert customer care, whether it's routine servicing or something more urgent. If there is an emergency breakdown situation, we need to act fast. This is why all our dealers operate their own fleets of support vehicles, enabling parts to be delivered quickly and fitted expertly, and fulfilling our promise to keep our customers working.

**Advanced technology.** At JCB, we are constantly looking at new, innovative ways to help you get the most out of your machine. Our latest development is JCB LiveLink, an advanced telematics system using satellite and cellular technology that enables you to better protect your machine and accurately monitor and improve its performance. Using JCB LiveLink

can benefit your business in many ways, from increasing the security of your machines to improving fleet utilisation. It can also enable your JCB dealer to view your machine and guarantee timely servicing of your fleet, improving uptime.



**Maximising earning potential.** We grow as our customers grow. That's why, at JCB, we are committed to offering expert financial advice and support to help customers maximise their earning potential.

Finance options\* are available for new and used machinery, all part of our dedication to helping customers preserve their working capital while spreading costs in the most effective and tax-efficient way.

And as well as financial help, we are also happy to offer JCB Insurance.\* We specialise in construction and industrial insurance and in offering Insurance Premium Finance facilities.

*\* Please check individual countries for available services.*





JCB Sales Limited, Rocester, Staffordshire, United Kingdom ST14 5JP. Tel: +44 (0)1889 590312 Email: [salesinfo@jcb.com](mailto:salesinfo@jcb.com)

Download the very latest information on this product range at: [www.jcb.com](http://www.jcb.com)

©2009 JCB Sales. All rights reserved. No part of this publication may be reproduced, stored in a retrieval system, or transmitted in any form or by any other means, electronic, mechanical, photocopying or otherwise, without prior permission from JCB Sales. JCB reserves the right to change specifications without notice. Illustrations and specifications shown may include optional equipment and accessories. The JCB logo is a registered trademark of J C Bamford Excavators Ltd.