



Robex 180LC-7A

### Standard Equipment

#### ISO standard cab

- All-weather steel cab with all-around visibility
- Safety glass windows
- Raise-up type windshield wiper
- Sliding fold-in front window
- Sliding side window
- Lockable door
- Hot & cool box
- Accessory box & Ashtray

#### Computer Aided Power Optimization(New CAPO) system

- 2-power mode, 3-work mode, 2-user mode
- Auto deceleration & one touch deceleration system
- Auto warm up system
- Auto overheat prevention system

#### Heater & Defroster

#### Self diagnostic system

#### Starting aid, cold weather

#### Centralized monitoring

- LCD display
- Engine speed
- Clock & Error code
- Gauges
- Fuel level gauge
- Engine coolant temperature gauge
- Hyd. oil temperature gauge
- Warning
- Engine coolant & Fuel level
- Check Engine & CPU
- Engine oil pressure
- Engine coolant temperature
- Hyd. oil temperature
- Low battery
- Air cleaner clogging
- Indicator
- Power max.
- Preheat & engine warming-up
- One touch decel

#### Door and cab locks, one key

#### AM/FM radio and cassette

- Radio remote switch

#### Two outside rearview mirrors

#### Fully adjustable suspension seat with seat belt

#### Slidable joystick, pilot-operated

#### Console box tilting system (LH.)

#### Three front working light

#### Electric horn

#### Batteries (2 × 12 V × 100 AH)

#### Battery master switch

#### Automatic swing brake

#### Removable reservoir tank

#### Water separator, fuel line

#### Boom holding system

#### Arm holding system

#### Counterweight (2950 kg, 6500 lb)

#### Mono boom (5.1 m, 16' 9")

#### Arm (2.6 m, 8' 6")

#### Track shoes (600 mm, 24")

#### Track rail guard

#### Fuel warmer

### Optional Equipment

#### Air-conditioner (5000 kcal/hr, 20000 BTU/hr)

#### Sun visor for cabin inside

#### Fuel filler pump (35 l /min, 9.5 USgpm)

#### Beacon lamp

#### Safety lock valve for boom cylinder

#### with overload warning device

#### Safety lock valve for arm cylinder

#### Single acting piping kit (breaker, etc)

#### Double acting piping kit (clamshell, etc)

#### Rotating piping kit

#### Accumulator, work equipment lowering

#### 12 volt power supply (DC-DC converter)

#### Electric. transducer

#### Travel alarm

#### CD Player

#### Various optional Boom

- Hyd. adjustable boom (5.1m, 16' 9")

#### Various optional Arms

- Short arm (2.2m, 7' 3")
- Long arm (3.10m, 10' 2")

#### Various optional Buckets (SAE heaped)

- Standard bucket (0.76m<sup>3</sup>, 0.99yd<sup>3</sup>)
- Narrow bucket (0.39m<sup>3</sup>, 0.51yd<sup>3</sup>)
- Narrow bucket (0.50m<sup>3</sup>, 0.44yd<sup>3</sup>)
- Narrow bucket (0.64m<sup>3</sup>, 0.55yd<sup>3</sup>)
- Light duty bucket (0.89m<sup>3</sup>, 1.16yd<sup>3</sup>)
- Light duty bucket (1.05m<sup>3</sup>, 1.37yd<sup>3</sup>)
- Heavy duty bucket(0.69m<sup>3</sup>, 0.9yd<sup>3</sup>)

#### Cabin lights

#### Cabin FOPS/FOG(ISO/DIS 10262)

#### Cabin Roof-cover Transparent

#### Track shoes

- Triple grousers shoe (500mm, 20")
- Triple grousers shoe (700mm, 28")
- Triple grousers shoe (800mm, 32")

#### Lower frame under cover

#### Pre heating system

#### Tool kit

#### Operator suit

#### Special cowl

- Air vent type side door

#### Emergency engine control cable

#### Seat

- Adjustable air suspension seat
- Mechanical Suspension seat with heater
- Adjustable air suspension seat with heater

Building a better future  
**Global Leader**

*Robex* **NEW 7A SERIES**

CRAWLER EXCAVATOR *Applied Tier 3 Engine*

# 180LC-7A



We build a better future

Standard and optional equipment may vary. Contact your Hyundai dealer for more information. The machine shown may vary according to International standards. All US measurement rounded off to nearest pounds or inches.

**HYUNDAI**  
HEAVY INDUSTRIES CO., LTD.  
CONSTRUCTION EQUIPMENT DIVISION

Head Office (Sales Office) 1 CHEONHA-DONG, DONG-KU, ULSAN, KOREA  
Tel : (82) (52) 202-7970, 7729 Fax : (82) (52) 202-7979, 7720

U.S. Operation Hyundai Construction Equipment U.S.A., Inc.  
955 ESTES AVENUE, ELK GROVE VILLAGE IL, 60007  
Tel : (1) 847-437-3333 Fax : (1) 847-437-3574

European Operation Hyundai Heavy Industries Europe N.V.  
VOSSENDAAL 11, 2440 GEEL, BELGIUM  
Tel : (32) 14-562200 Fax : (32) 14-593405 ~ 06

PLEASE CONTACT

www.hyundai-ce.com

2007. 07 Rev 0

**HYUNDAI**  
HEAVY INDUSTRIES CO., LTD.

Some of the photos may include optional equipment.

Robex 180LC-7A

# Built for Maximum Power, Performance, Reliability.

A new chapter in construction equipment has now begun.  
Making the dream a reality.

*Robex* 180LC-7A



■ Some of the photos may include optional equipment.

Operator's Comfort is Foremost.  
Wide Cab Exceeds Industry Standards.

## Technology in Cab Design



### Visibility

- Even more visibility than before, for safer, more efficient operating.



### Excellent Ventilation

- Ventilation has been improved by the addition of the larger fresh air intake system, and by providing additional air flow throughout the cab.
- Sliding front and side windows provide improved ventilation.
- A large sunroof offers upward visibility and additional ventilation.



### Comfortable Operator Environment

- The control levers and seat can be adjusted to provide maximum operator comfort.
- The seat is fully adjustable for optimum operating position, reducing operator fatigue.
- Console boxes slide forward and backward for improved accessibility.
- The proportional pressure controls reduce unnecessary exertion while ensuring precise operation.
- Large windows allow excellent visibility in all directions.



### Low noise design

- The Robex new 7A series was designed with low operation noise in mind.
- Hyundai engineering helps to keep interior and exterior noise levels to a minimum.
- The cab's noise levels have been additionally reduced by improving the door seals for the cab and engine compartments.
- An insulated diesel engine compartment with sound-damping material also reduces noise.



- 1 Wide, Comfortable Operating Space
- 2 Steel Cover Sunroof
- 3 Dial Type Engine Speed Switch and / Key Switch

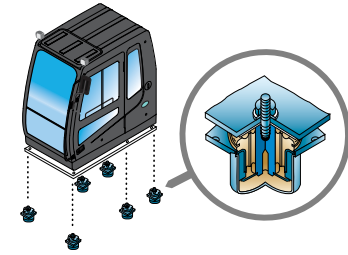
### Remote Radio Control and Deluxe Cassette



# Robex 180LC-7A



**Improved Intelligent Display Instrument Panel**  
Instrument Panel is installed in front of RH console box. It is easy to check all critical systems with easy-to-read indicators.



**Minimization of Shock and Vibration through Cab Mounting System**  
The application of Viscous Mounting to the cabin support provides the operator with a much improved ride. The operator work efficiency will increase as the shock and noise level in the cabin decreases.



## Operating Environment

## Maximum Protection



**▲ Storage box and Cup Holder**  
An Additional storage box and cup holder are located behind operator's seat, and it keeps food and beverages cool or hot.

**◀ Wide Cab with Excellent Visibility**  
The cab is roomy and ergonomically designed with low noise level and good visibility. A full view front window and large rear and side windows provide excellent visibility in all directions.



**Highly Sensitive Joystick and Easy Entrance**  
New joystick grips for precise control have been equipped with 4 switches.

- Left Power boost/Dummy  
One touch deceleration
- Right Horn/Optional/Dummy



**Easy-to-Reach Control Panels**  
Switches and other essential controls are located near the operator. This helps keep operator movement to a minimum, enhancing control with less operator fatigue.



**Rear Emergency Exit Window**  
Rear Exit Window is designed with easy exit for operator's safety.



**Raise-up Wiper and Cabin Lights**  
Raise-up wiper has enhanced for the better front view. Cabin Lights enhances safety by brightly lighting the surroundings during night work(optional)

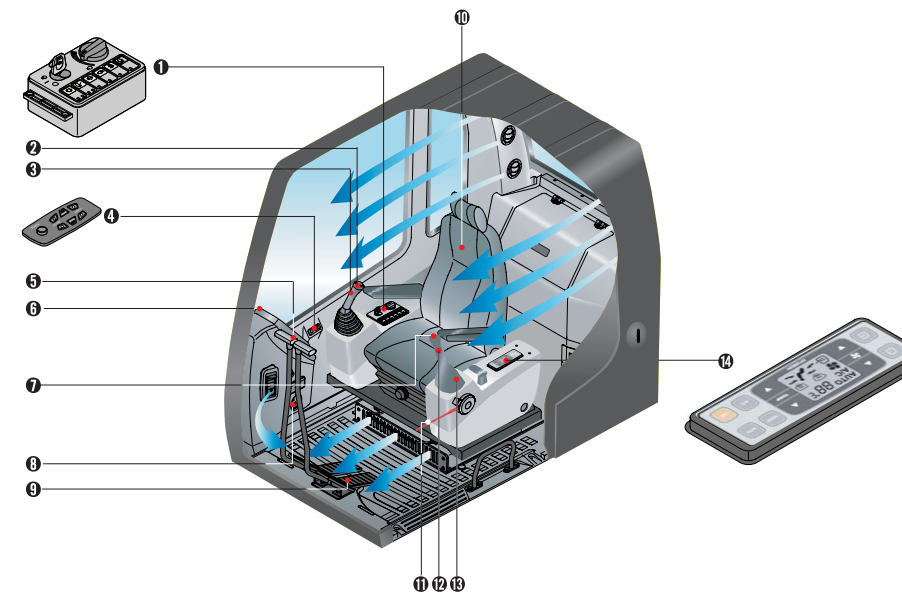


**Wide, Comfortable Operating Space**  
All the controls are designed and positioned according to the latest ergonomic research. Reinforced pillars have also been added for greater cab rigidity.

### Smooth Travel Pedal and Foot Rests



### The best working conditions in a pleasant environment.



- ① Centralized control panel
- ② Horn button
- ③ Option button
- ④ Remote Radio control
- ⑤ Travel lever
- ⑥ Cluster
- ⑦ One touch decel button
- ⑧ Hour meter
- ⑨ Travel pedal
- ⑩ Fully adjustable suspension seat
- ⑪ Safety lever
- ⑫ Power boost button
- ⑬ Joystick control lever
- ⑭ Air Conditioner and Heater controller



### Automatic Engine Overheat Prevention

If the engine coolant temperature gets too high, the CPU controller lowers the engine speed and cools the engine.



### Anti Restart System

The new system protects the starter from re-starting during engine operation, even if the operator accidentally turns the start key again.



### Power boost control System

When the power boost system is activated, digging power increases about 10%. It is especially useful when extra power is temporarily needed, for instance, when digging hard earth and rock, or if the bucket teeth are stopped by a stubborn tree root.



### Automatic Warming-up System

After the engine is started, if the engine coolant temperature is low, the CPU controller increases the engine speed and automatically increases the pump flow rate to warm up the engine more effectively.

## Mitsubishi D04FD-TAA Engine

The four cylinders turbocharged and charged air cooled, engine is built for power, reliability and economy. This engine meets EPA tier 3 and EUstage 3A emission regulation.



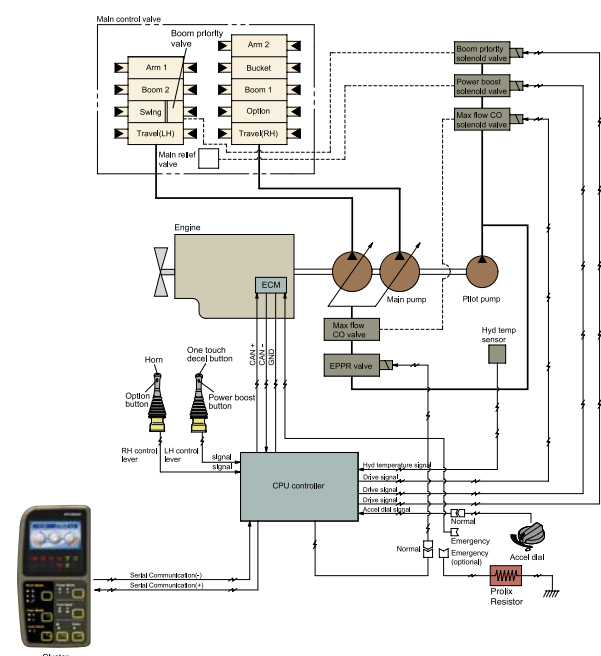
### Reliability You Can Depend On

When you have a tough job to do you need the power precision and flexibility of Mitsubishi D04FD-TAA engines. It features major enhancements to make every piece of equipment work harder, smarter, quieter and longer. The high Pressure Common Rail Fuel System provides enhanced engine performance with higher torque and better throttle response at every rpm without compromising fuel economy.

The Mitsubishi D04FD-TAA engine is based on the highly successful Mitsubishi SK series engines. These engines combine proven full authority electronic controls with reliable performance you expect from one of the most successful and durable engine design.

## Advanced Hydraulic System

### ADVANCED CAPO SYSTEM



The advanced CAPO(Computer Aided Power Optimization) system maintains engine and mutual pump power at optimum levels. Mode selections are designed for various work loads and maintaining high performance while reducing fuel consumption. Features such as auto deceleration and power boost are included in the system. The system monitors engine speed, coolant temperature, and hydraulic oil temperature. Contained within the system are self diagnostic capabilities which are displayed by error codes on the cluster.

### Self Diagnosis System

The CPU controller diagnoses problems in the CAPO system caused by electric and hydraulic malfunctions and displays them on the LCD monitor of the cluster through error codes. This controller has the capacity to identify 48 distinct types of errors. As the information from this device, such as engine rpm, main pump delivery pressure, battery voltage, hyd. temperature, and the state of all types of electric switches, provides the operator with a much more exact state of machine operating condition. This makes the machine easier to troubleshoot when anything does go wrong.

### One Touch Decel System

When the one touch decel switch is pressed, CPU controller controls the accel actuator to reduce engine speed to 850 rpm. And then the one touch decel switch is pressed again, the engine speed recovers.

### Pump Flow Control System

In neutral position: Pump flow is reduced to a minimum to eliminate power loss. In operation: Maximum pump flow is delivered to the actuator to increase the speed. With movement of the control lever, pump flow is automatically adjusted and the actuator speed can be proportionally controlled.

### Boom & Arm Holding System

The Holding valves in the main control valve prevents the boom & arm from dropping over an extended period in neutral position.

### Arm Flow Regeneration System

Arm flow regeneration valve provides smooth arm-in operation without cavitation.

### Hydraulic Damper in Travel Pedal

Improved travel controllability & feeling by shock reducing when starting and stopping.

## Increased Higher Performance



### Reinforced Bucket and Bucket Linkage

Sealed and adjustable bucket linkage provides less wear of pins and bushes as well as silent operation. The design includes bucket link durability and anti wear characteristics. Additional reinforcement plates on cutting edge section. Reinforced bucket is made with thicker steel and additional lateral plate.



### Strong and Stable Lower Frame

Reinforced box-section frame is all welded, low-stress, high-strength steel. It guarantees safety and resistance against external impact when driving on rough ground and working on wet sites through high tensile strength steel panels, with highly durable upper and lower rollers and track guards. Long undercarriage incorporates heavy duty excavator style components. X-leg type center frame is integrally welded for maximum strength and durability.



### Track Rail Guide & Adjusters

Durable track rail guides keep track links in place. Track adjustment is made easy with standard grease cylinder track adjusters and shock absorbing springs. (Full Track Guide : Option)

### Powerful and Preciser Swing Control

Improved shock absorbing characteristics make stopping a precise and smooth action



### NEW MODE CONTROL SYSTEM



- POWER MODE**  
H mode: High power    S mode: Standard power
- WORK MODE**  
Heavy duty work    General work    Breaker
- USER MODE**  
M mode: Maximum Power  
U mode: Memorizing Operator's Preferable Power Setting

### Auto Deceleration System

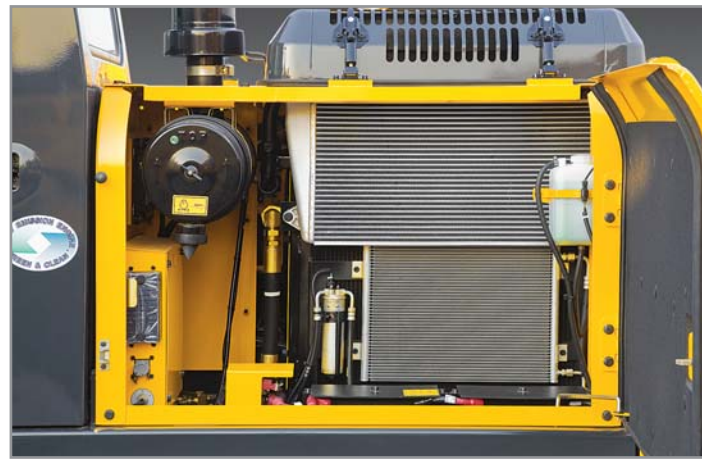
When remote-control valves are in neutral position more than 4 seconds, CPU controller instructs the accel actuator to reduce engine speed to 1000rpm. This decreases fuel consumption and reduces cab noise levels.

### Max. Flow Cut-off System

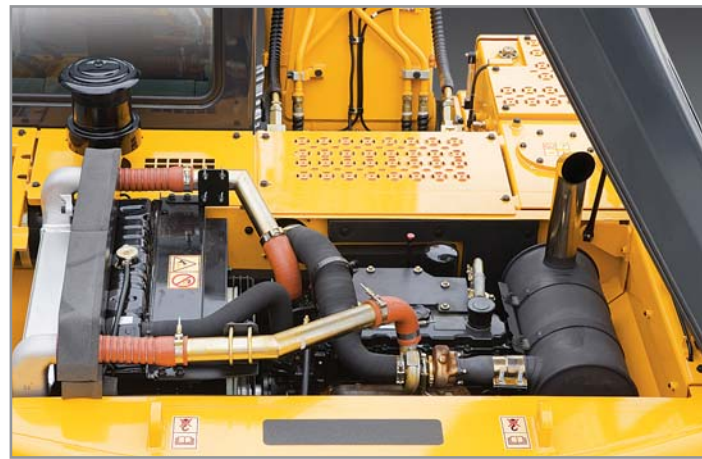
For precise control and finishing work, the Max. Flow Cut-off System reduces pump flow, thus allowing smooth operation.

Full open doors and master key system provide easy access for servicing.

## Reliability & Serviceability



**Side Cover with Left & Right Swing Open Type**  
Easy access to vital components gives unrestricted view of component allows easy maintenance and repair.



**Easy to maintain engine components**  
The cooling and preheating system are provided for optimum and immediate operation, guaranteeing longer life for the engine and hydraulic components. Servicing of the engine and hydraulics is considerably simplified due to total accessibility.



**Easy to Change Air Cleaner Assembly**  
Air cleaner is centralized in one or the same compartment for easy service.

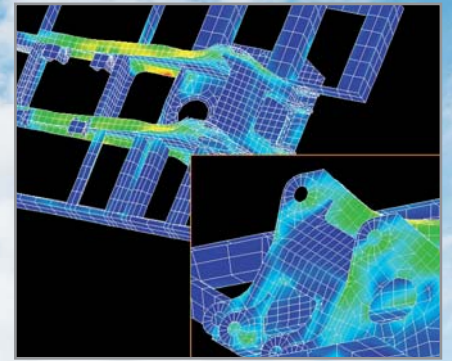


**Highly efficient Hydraulic Pump**  
Pump output capacity has been increased.



**Large tool box for extra storage**

Durability of structure proven through FEM(Finite Element Method) analysis and long term durability test.



■ Some of the photos may include optional equipment.

## Engine

Model		Mitsubishi D04FD-TAA	
Type		Water cooled, 4 cycle diesel, 4-cylinders in line, direct injection turbocharged and charge air cooled	
Rated flywheel horse power	SAE	J1995 (gross)	126 HP (94 kW) at 2,000 rpm
		J1349 (net)	116 HP (87 kW) at 2,000 rpm
	DIN	6271/1 (gross)	128 PS (94 kW) at 2,000 rpm
		6271/1 (net)	118 PS (87 kW) at 2,000 rpm
Max. torque		47.7 kgf-m(345 lbf-ft) at 1,800 rpm	
Bore x stroke		102 x 130 mm (4.02" x 5.12")	
Piston		4,249 cc (259.3in <sup>3</sup> )	
Batteries		2 x 12 V x 100 AH	
Starting motor		24 V- 5.0kW	
Alternator		24V-50 Amp	

## Hydraulic system

Main pump	
Type	Two variable displacement piston pumps
Rated flow	2 x 160 ℓ pm (44.4 US gpm / 37.0 UK gpm)
Sub-pump for pilot circuit	Gear pump
Cross-sensing and fuel saving pump system	
Hydraulic motors	
Travel	Two speed axial piston motor with brake valve and parking brake
Swing	Axial piston motor with automatic brake
Relief valve setting	
Implement circuits	330 kgf/cm <sup>2</sup> (4,690 psi)
Travel	330 kgf/cm <sup>2</sup> (4,690 psi)
Power boost (boom, arm, bucket)	360 kgf/cm <sup>2</sup> (5,120 psi)
Swing circuit	240 kgf/cm <sup>2</sup> (3,410 psi)
Pilot circuit	35 kgf/cm <sup>2</sup> (500 psi)
Service valve	Installed
Hydraulic cylinders	
No. of cylinder-bore x rod x stroke	Boom : 2-115 × 80 × 1,090 mm (4.5" × 3.1" × 42.9")
	Arm : 1-120 × 85 × 1,340 mm (4.7" × 3.3" × 52.8")
	Bucket : 1-115 × 80 × 950 mm (4.5" × 3.1" × 37.4")
	Blade : 2-110 × 75 × 320 mm (4.3" × 3.0" × 12.6")
	2-PCS 1st : 2-115 × 80 × 960 mm (4.5" × 3.1" × 37.8") 2nd : 1-160 × 95 × 650 mm (6.3" × 3.7" × 25.6")

## Drives & Brakes

Drive method	Fully hydrostatic type
Drive motor	Axial piston motor, in-shoe design
Reduction system	RV gear
Max. drawbar pull	17,000 kgf (37,500 lbf)
Max. travel speed(high) / (low)	5.2 km/hr (3.2 mph) / 3.1 km/hr (2.1 mph)
Gradeability	30° (58 %)
Parking brake	Wet multi-disc

## Control

Pilot operated joysticks and pedals easy and fatigueless operation.

Pilot control	Two joysticks with one safety lever (LH): Swing and arm, (RH): Boom and bucket(ISO)
Traveling and steering	Two levers with pedals
Engine throttle	Electric, Accel Dial Switch
Lights	Two lights mounted on the boom one in the tool box

## Swing system

Swing motor	Axial piston motor
Swing reduction	Planetary gear reduction
Swing bearing lubrication	Grease-bathed
Swing brake	Wet multi-disc
Swing speed	11.3 rpm

## Coolant & Lubricant capacity

(refilling)	liter	US gal	UK gal
Fuel tank	260.0	68.7	57.2
Engine coolant	28	7.4	6.2
Engine oil	17.5	4.6	3.8
Swing device-gear oil	5	1.3	1.1
Final drive(each)-gear oil	5.4	1.4	1.2
Hydraulic system(including tank)	240	63.4	52.8
Hydraulic tank	160	42.3	35.2

## Undercarriage

X-leg type center frame is integrally welded with reinforced box-section track frames. The undercarriage includes lubricated rollers, idlers, track adjusters with shock absorbing spring sprockets, and track chain with triple grouser shoes.

Center frame	X - leg type
Track frame	Pentagonal box type
No. of shoes on each side	51
No. of carrier roller on each side	2
No. of track roller on each side	8
No. of rail guides on each side	2

## Operating weight (approximate)

Operating weight, including 5.1m (16' 9") mono boom, 2.6m (8' 6") arm, SAE heaped 0.76 m<sup>3</sup> (0.99 yd<sup>3</sup>) backhoe bucket, lubricant, coolant, full fuel tank, hydraulic tank and the standard equipment.

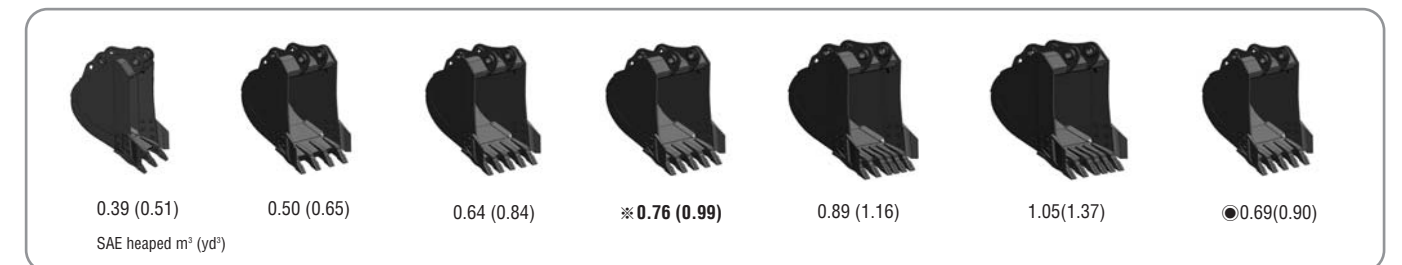
Major component weight	
Upperstructure	4,530kg (9,900 lb)
Counterweight	2,950kg (6,500 lb)
5.1m (16' 9") mono boom(with arm cylinder)	1,250kg (2,760 lb)
Hydraulic adjustable boom(with arm cylinder)	1,780kg (3,920 lb)

## Operating weight

Shoes(Triple grouser) mm (in)	Operating weight kg (lb)	Ground pressure kgf/cm <sup>2</sup> (psi)
500 (20")	180LC-7A	17,950(39,580)
	180LCD-7A	19,010(41,910)
※600 (24")	180LC-7A	18,200(40,120)
	180LCD-7A	19,260(42,460)
700 (28")	180LC-7A	18,450(40,680)
	180LCD-7A	19,510(43,010)
800 (32")	180LC-7A	18,700(41,230)
	180LCD-7A	19,770(43,580)

※ Standard equipment

## Buckets



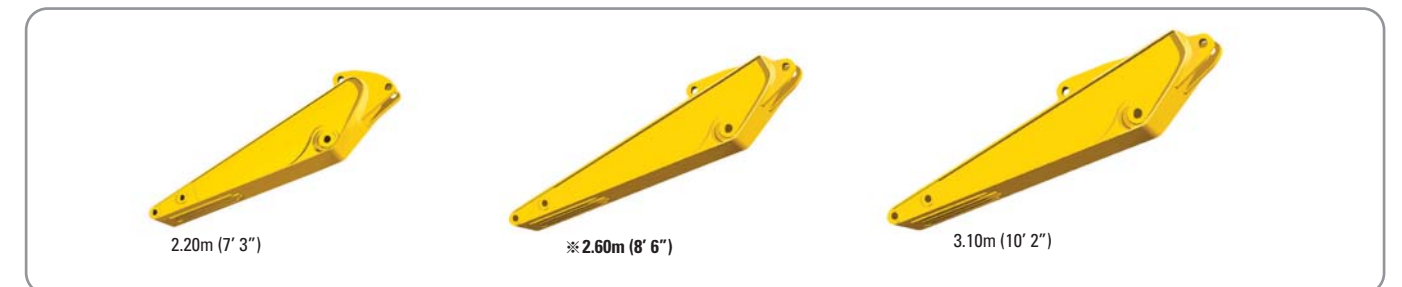
Capacity m <sup>3</sup> (yd <sup>3</sup> )		Width mm (in)		Weight kg (lb)	Recommendation m(ft.in)					
SAE heaped	CECE heaped	Without side cutters	With side cutters		Boom	※5.1 (16' 9")			5.1(16'9")Hydraulic adjustable boom	
					Arm	2.2 (7' 3")	※2.6 (8' 6")	3.1 (10' 2")	2.2 (7' 3")	2.6 (8' 6")
0.39(0.51)	0.34(0.44)	620(24.4)	740(29.1)	410(900)	●	●	●	●	●	
0.50(0.65)	0.44(0.58)	760(29.9)	880(34.6)	470(1,040)	●	●	●	●	●	
0.64(0.84)	0.55(0.72)	920(36.2)	1,040(40.9)	510(1,120)	●	●	■	●	■	
※0.76(0.99)	0.65(0.85)	1,060(41.7)	1,180(46.5)	570(1,260)	●	■	▲	■	▲	
0.89(1.16)	0.77(1.01)	1,220(48.0)	1,340(52.8)	610(1,340)	■	▲	-	▲	-	
1.05(1.37)	0.90(1.18)	1,400(55.1)	1,520(59.8)	680(1,500)	▲	-	-	▲	-	
◎0.69(0.90)	0.62(0.81)	990(39.0)	-	700(1,540)	●	■	▲	■	▲	

※ : Standard backhoe bucket  
◎ : Heavy duty bucket

● : Applicable for materials with density of 2,000 kg / m<sup>3</sup> (3,370 lb/ yd<sup>3</sup>) or less  
■ : Applicable for materials with density of 1,600 kg / m<sup>3</sup> (2,700 lb/ yd<sup>3</sup>) or less  
▲ : Applicable for materials with density of 1,100 kg / m<sup>3</sup> (1,850 lb/ yd<sup>3</sup>) or less

## Arms

Boom and arms are of all-welded, low-stress, full-box section design. 5.1m(16' 9") mono boom, 5.1m(16' 9") hydraulic adjustable boom and 2.20m(7' 3"), 2.60m(8' 6"), 3.10m(10' 2") arms are available. Buckets are all-welded, high-strength steel implements.



## Digging force

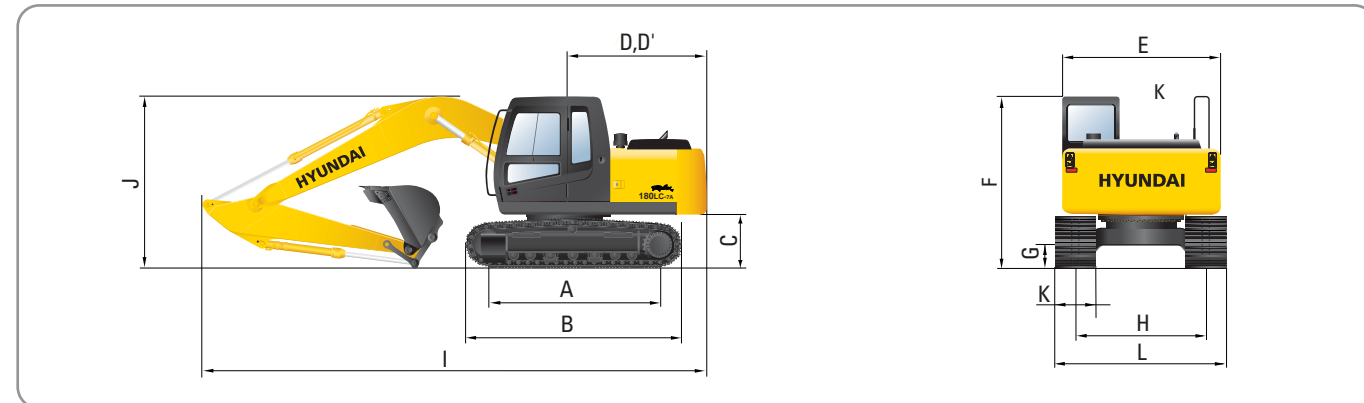
Arm	Length	m(ft.in)	2.20 (7' 3")		※2.60 (8' 6")		3.10 (10' 2")		Remark
			Weight	kg(lb)	750 (1560)	810 (1790)	890 (1960)		
Bucket digging force	SAE	kN	108.6 [118.4]	108.6 [118.4]	108.6 [118.4]	108.6 [118.4]	108.6 [118.4]	[ ]: Power Boost	
			kgf	11,070 [12,080]	11,070 [12,080]	11,070 [12,080]	11,070 [12,080]		
	lbf	24,410 [26,630]	24,410 [26,630]	24,410 [26,630]	24,410 [26,630]				
	ISO	kN	124.5 [135.9]	124.5 [135.9]	124.5 [135.9]	124.5 [135.9]			
Arm crowd force	SAE	kN	85.2 [93.0]	75.0 [81.8]	67.4 [73.5]	67.4 [73.5]	[ ]: Power Boost		
			kgf	8,690 [9,480]	7,650 [8,350]	6,870 [7,490]		6,870 [7,490]	
	lbf	19,160 [20,900]	16,870 [18,400]	15,150 [16,530]	15,150 [16,530]				
	ISO	kN	89.0 [97.1]	77.6 [84.6]	69.4 [75.7]	69.4 [75.7]			
	kgf	9,080 [9,910]	7,910 [8,630]	7,080 [7,720]	7,080 [7,720]				
	lbf	20,020 [21,840]	17,440 [19,030]	15,610 [17,030]	15,610 [17,030]				

Note : Arm weight including bucket cylinder and linkage.

※ Standard arm

# Dimensions & Working ranges

## Dimensions R180LC-7A Mono boom



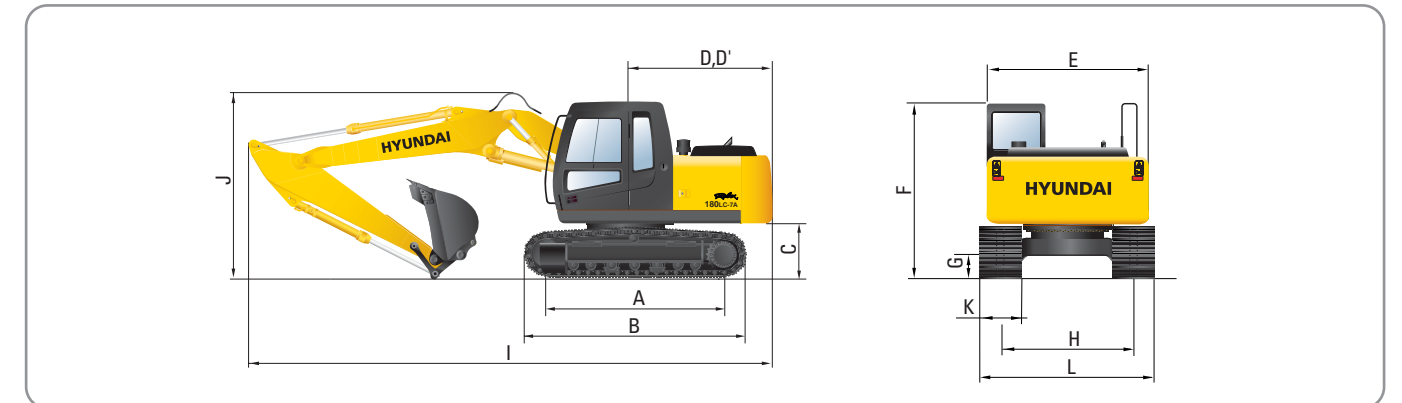
		mm (ft · in)
<b>A</b>	Tumbler distance	3,360 (11' 0")
<b>B</b>	Overall length of crawler	4,190 (13' 9")
<b>C</b>	Ground clearance of counterweight	1,050 (3' 5")
<b>D</b>	Tail swing radius	2,530 (8' 4")
<b>D'</b>	Rear-end length	2,480 (8' 2")
<b>E</b>	Overall width of upperstructure	2,475 (8' 1")
<b>F</b>	Overall height of cab	2,915 (9' 7")
<b>G</b>	Min. ground clearance	460 (1' 6")
<b>H</b>	Track gauge	2,250 (7' 5")

		mm (ft · in)			
	Boom length	※ 5,100 (16' 9")			
	Arm length	2,200 (7' 3")	2,600 (8' 6")	3,100 (10' 2")	
<b>I</b>	Overall length	8,620 (28' 3")	8,600 (28' 3")	8,600 (28' 3")	
<b>J</b>	Overall height of boom	2,960 (9' 9")	2,910 (9' 7")	3,090 (10' 2")	

<b>K</b>	Track shoe width	500 (20")	※ 600 (24")	700 (28")	800 (32")
<b>L</b>	Overall width	2,750 (9' 1")	2,850 (9' 5")	2,950 (9' 9")	3,050 (10' 1")

※ Standard equipment

## Dimensions R180LC-7A Hydraulic adjustable boom

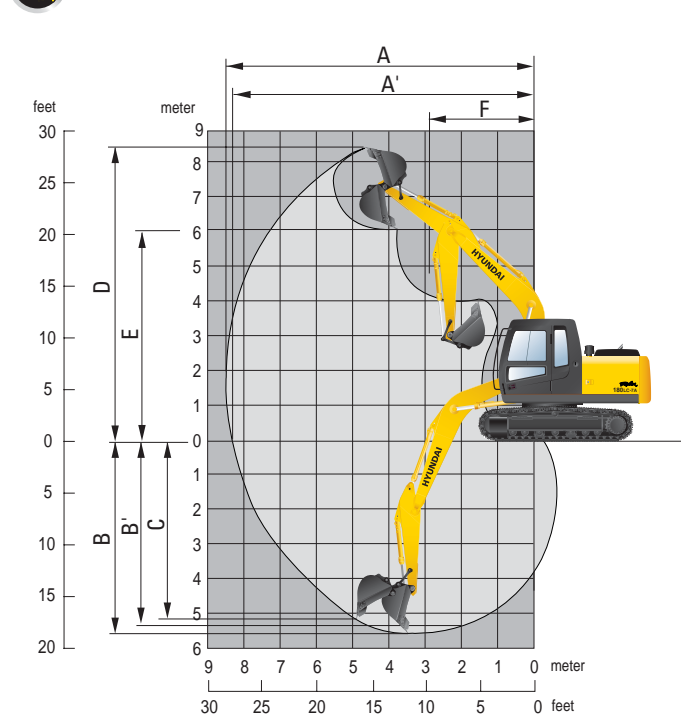


		mm (ft · in)
<b>A</b>	Tumbler distance	3,360 (11' 0")
<b>B</b>	Overall length of crawler	4,190 (13' 9")
<b>C</b>	Ground clearance of counterweight	1,050 (3' 5")
<b>D</b>	Tail swing radius	2,530 (8' 4")
<b>D'</b>	Rear-end length	2,480 (8' 2")
<b>E</b>	Overall width of upperstructure	2,475 (8' 1")
<b>F</b>	Overall height of cab	2,915 (9' 7")
<b>G</b>	Min. ground clearance	460 (1' 6")
<b>H</b>	Track gauge	2,250 (7' 5")

		mm (ft · in)			
	Boom length	5,100 (16' 9")			
	Arm length	2,200 (7' 3")	2,600 (8' 6")		
<b>I</b>	Overall length	8,580 (28' 2")	8,570 (28' 1")		
<b>J</b>	Overall height of boom	3,040 (9' 12")	3,050 (10' 0")		

<b>K</b>	Track shoe width	500 (20")	600 (24")	700 (28")	800 (32")
<b>L</b>	Overall width	2,750 (9' 1")	2,850 (9' 5")	2,950 (9' 9")	3,050 (10' 1")

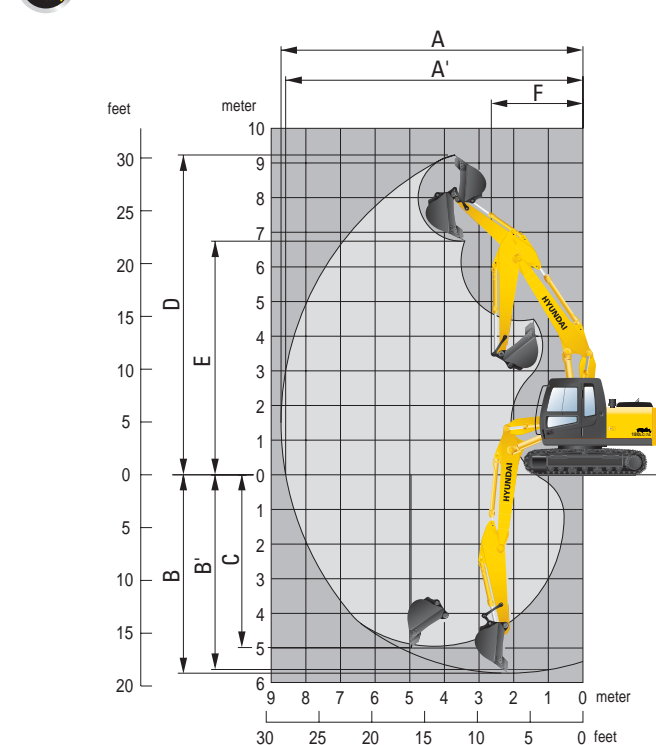
## Working ranges



		mm (ft · in)			
	Boom length	※ 5,100 (16' 9")			
	Arm length	2,200 (6' 3")	※ 2,600 (8' 6")	3,100 (10' 2")	
<b>A</b>	Max. digging reach	8,690 (28' 6")	9,030 (29' 8")	9,450 (31' 0")	
<b>A'</b>	Max. digging reach on ground	8,530 (27' 12")	8,870 (29' 1")	9,300 (30' 6")	
<b>B</b>	Max. digging depth	5,660 (18' 7")	6,060 (19' 11")	6,560 (21' 6")	
<b>B'</b>	Max. digging depth (8' level)	5,440 (17' 10")	5,860 (19' 3")	6,370 (20' 11")	
<b>C</b>	Max. vertical wall digging depth	5,140 (16' 10")	5,440 (17' 10")	5,730 (18' 10")	
<b>D</b>	Max. digging height	8,740 (28' 8")	8,870 (29' 1")	8,970 (29' 5")	
<b>E</b>	Max. dumping height	6,100 (20' 0")	6,240 (20' 6")	6,380 (20' 11")	
<b>F</b>	Min. swing radius	3,180 (10' 5")	3,170 (10' 5")	3,180 (10' 5")	

※ Standard equipment

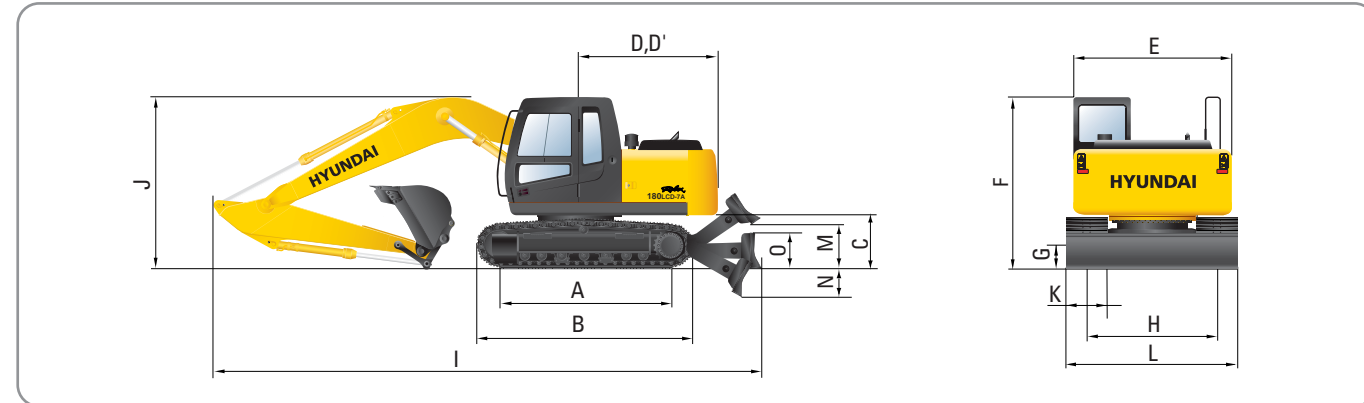
## Working ranges



		mm (ft · in)	
	Boom length	5,100 (16' 9")	
	Arm length	2,200 (7' 3")	2,600 (8' 6")
<b>A</b>	Max. digging reach	8,750 (28' 8")	9,110 (29' 11")
<b>A'</b>	Max. digging reach on ground	8,600 (28' 3")	8,960 (29' 5")
<b>B</b>	Max. digging depth	5,460 (17' 11")	5,830 (19' 2")
<b>B'</b>	Max. digging depth (8' level)	5,350 (17' 7")	5,750 (18' 10")
<b>C</b>	Max. vertical wall digging depth	4,670 (15' 4")	5,030 (16' 6")
<b>D</b>	Max. digging height	9,390 (30' 10")	9,600 (31' 6")
<b>E</b>	Max. dumping height	6,680 (21' 11")	6,900 (22' 8")
<b>F</b>	Min. swing radius	3,130 (10' 3")	2,970 (9' 9")

# Dimensions & Working ranges

## Dimensions R180LCD-7A

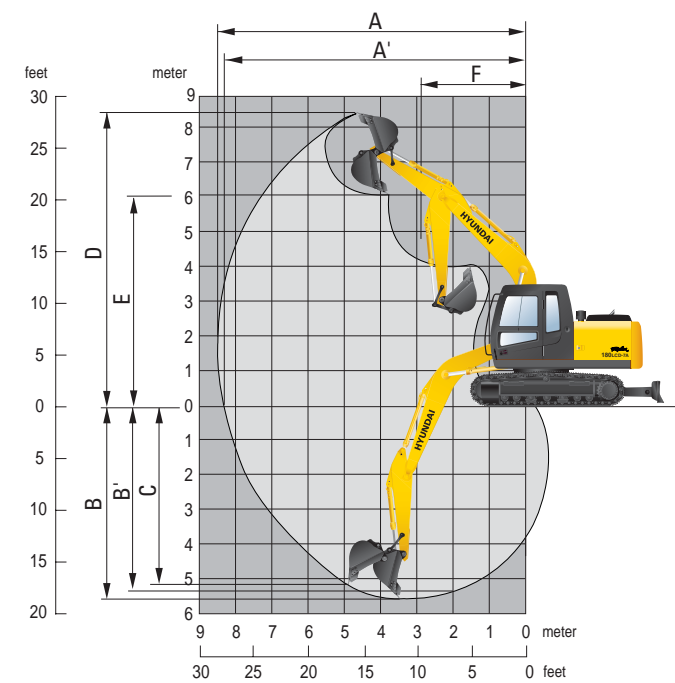


	mm (ft · in)
A	Tumbler distance 3,360 (11' 0")
B	Overall length of crawler 4,190 (13' 9")
C	Ground clearance of counterweight 1,050 (3' 5")
D	Tail swing radius 2,530 (8' 4")
D'	Rear-end length 2,480 (8' 2")
E	Overall width of upperstructure 2,475 (8' 1")
F	Overall height of cab 2,915 (9' 7")
G	Min. ground clearance 460 (1' 6")
H	Track gauge 2,250 (7' 5")
M	Ground clearance of blade up 780 (2' 7")
N	Depth of blade down 520 (1' 8")
O	Height of blade 645 (2' 1")
	Width of blade 2,850 (9' 4")

	mm (ft · in)			
Boom length	※ 5,100 (16' 9")			
Arm length	2,200 (7' 3")	2,600 (8' 6")	3,100 (10' 2")	
I Overall length	9,010 (29' 7")	8,990 (29' 6")	8,990 (29' 6")	
J Overall height of boom	2,960 (9' 9")	2,910 (9' 7")	3,090 (10' 2")	
K Track shoe width	500 (20")	※ 600 (24")	700 (28")	800 (32")
L Overall width	2,750 (9' 1")	2,850 (9' 5")	2,950 (9' 9")	3,050 (10' 1")

※ Standard equipment

## Working ranges



	mm (ft · in)			
Boom length	※ 5,100 (16' 9")			
Arm length	2,200 (6' 3")	※ 2,600 (8' 6")	3,100 (10' 2")	
A Max. digging reach	8,690 (28' 6")	9,030 (29' 8")	9,450 (31' 0")	
A' Max. digging reach on ground	8,530 (27' 12")	8,870 (29' 1")	9,300 (30' 6")	
B Max. digging depth	5,660 (18' 7")	6,060 (19' 11")	6,560 (21' 6")	
B' Max. digging depth (8' level)	5,440 (17' 10")	5,860 (19' 3")	6,370 (20' 11")	
C Max. vertical wall digging depth	5,140 (16' 10")	5,440 (17' 10")	5,730 (18' 10")	
D Max. digging height	8,740 (28' 8")	8,870 (29' 1")	8,970 (29' 5")	
E Max. dumping height	6,100 (20' 0")	6,240 (20' 6")	6,380 (20' 11")	
F Min. swing radius	3,180 (10' 5")	3,170 (10' 5")	3,180 (10' 5")	

※ Standard equipment

# Lifting Capacities

## Lifting capacities R180LC-7A Mono boom

Rating over-front Rating over-side or 360 degree

• Boom : 5.10 m (16' 9") • Arm : 2.20 m (7' 3") • Bucket : 0.76 m<sup>3</sup> (0.99 yd<sup>3</sup>) SAE heaped • Shoe : 600 mm(24") triple grouser with 2,950 kg (6,500 lb) CWT

Load point height m(ft)		Load radius								At max. reach		
		1.5 m(5.0 ft)		3.0 m(10.0 ft)		4.5 m(15.0 ft)		6.0 m(20.0 ft)		Capacity	Reach	
		Rating over-front	Rating over-side or 360 degree	Rating over-front	Rating over-side or 360 degree	Rating over-front	Rating over-side or 360 degree	Rating over-front	Rating over-side or 360 degree	kg (lb)	m (ft)	
7.5 m	kg									*3380	*3380	5.81
25.0 ft	lb									*7450	*7450	(19.1)
6.0 m	kg									*3320	2730	7.16
20.0 ft	lb									*7320	6020	(23.5)
4.5 m	kg					*4240	*4240	*3800	3590	*3340	2230	7.92
15.0 ft	lb					*9350	*9350	*8380	7910	*7360	4920	(26.0)
3.0 m	kg					*8440	*8440	*5370	*5370	*4250	3450	8.30
10.0 ft	lb					*18610	*18610	*11840	*11840	*9370	7610	(27.2)
1.5 m	kg					*6520	5100	*4780	3290	3160	1950	8.34
5.0 ft	lb					*14370	11240	*10540	7250	6970	4300	(27.4)
Ground Line	kg					*6730	*6730	*7130	4870	*5110	3170	8.06
	lb					*14840	*14840	*15720	10740	*11270	6990	(26.4)
-1.5 m	kg	*6630	*6630	*10510	9380	*7050	4810	*5050	3120	*3580	2330	7.42
-5.0 ft	lb	*14620	*14620	*23170	20680	*15540	10600	*11130	6880	*7890	5140	(24.3)
-3.0 m	kg	*10580	*10580	*8940	*8940	*6190	4870			*3360	3090	6.28
-10.0 ft	lb	*23320	*23320	*19710	*19710	*13650	10740			*7410	6810	(20.6)
-4.5 m	kg					*5810						
-15.0 ft	lb					*12810						

• Boom : 5.10 m (16' 9") • Arm : 2.60 m (8' 6") • Bucket : 0.76 m<sup>3</sup> (0.99 yd<sup>3</sup>) SAE heaped • Shoe : 600 mm(24") triple grouser with 2,950 kg (6,500 lb) CWT

Load point height m(ft)		Load radius								At max. reach						
		1.5 m(5.0 ft)		3.0 m(10.0 ft)		4.5 m(15.0 ft)		6.0 m(20.0 ft)		7.5 m(25.0 ft)		Capacity	Reach			
		Rating over-front	Rating over-side or 360 degree	Rating over-front	Rating over-side or 360 degree	Rating over-front	Rating over-side or 360 degree	Rating over-front	Rating over-side or 360 degree	Rating over-front	Rating over-side or 360 degree	kg (lb)	m (ft)			
7.5 m	kg										*3060	*3060	6.33			
25.0 ft	lb										*6750	*6750	(20.8)			
6.0 m	kg							*2730	*2730		*3040	2480	7.56			
20.0 ft	lb							*6020	*6020		*6700	5470	(24.8)			
4.5 m	kg							*3480	*3480		*3090	2050	8.28			
15.0 ft	lb							*7670	*7670		*6810	4520	(27.2)			
3.0 m	kg					*7340	*7340	*4920	*4920	*3970	3460	3010	1850	8.64		
10.0 ft	lb					*16180	*16180	*10850	*10850	*8750	7630	*5600	5160	6640	4080	(28.3)
1.5 m	kg					*7700	*7700	*6170	5120	*4550	3280	*3320	2270	2940	1790	8.68
5.0 ft	lb					*16980	*16980	*13680	11290	*10030	7230	*7320	5000	6480	3950	(28.5)
Ground Line	kg					*7450	*7450	*6950	4850	*4980	3130	*3150	2200	3050	1860	8.42
	lb					*16420	*16420	*15320	10690	*10980	6900	*6940	4850	6720	4100	(27.6)
-1.5 m	kg	*6320	*6320	*10020	9260	*7070	4740	*5050	3060					*3430	2100	7.81
-5.0 ft	lb	*13930	*13930	*22090	20410	*15590	10450	*11130	6750					*7560	4630	(25.6)
-3.0 m	kg	*9350	*9350	*9550	9390	*6450	4770	*4500	3090					*3350	2700	6.75
-10.0 ft	lb	*20610	*20610	*21050	20700	*14220	10520	*9920	6810					*7390	5950	(22.1)
-4.5 m	kg					*6930	*6930	*4590	*4590							
-15.0 ft	lb					*15280	*15280	*10120	*10120							

• Boom : 5.10 m (16' 9") • Arm : 3.10 m (11' 1") • Bucket : 0.76 m<sup>3</sup> (0.99 yd<sup>3</sup>) SAE heaped • Shoe : 600 mm(24") triple grouser with 2,950 kg (6,500 lb) CWT

Load point height m(ft)		Load radius								At max. reach						
		1.5 m(5.0 ft)		3.0 m(10.0 ft)		4.5 m(15.0 ft)		6.0 m(20.0 ft)		7.5 m(25.0 ft)		Capacity	Reach			
		Rating over-front	Rating over-side or 360 degree	Rating over-front	Rating over-side or 360 degree	Rating over-front	Rating over-side or 360 degree	Rating over-front	Rating over-side or 360 degree	Rating over-front	Rating over-side or 360 degree	kg (lb)	m (ft)			
7.5 m	kg										*2700	*2700	6.92			
25.0 ft	lb										*5950	*5950	(22.7)			
6.0 m	kg							*2620	*2620		*2730	2200	8.05			
20.0 ft	lb							*5780	*5780		*6020	4850	(26.4)			
4.5 m	kg							*3090	*3090	*1910	*1910	*2800	1840	8.73		
15.0 ft	lb							*6810	*6810	*4210	*4210	*6170	4060	(28.6)		
3.0 m	kg					*4350	*4350	*3620	3460	*2820	2330	2690	1660	9.06		
10.0 ft	lb					*9590	*9590	*7980	7630	*6220	5140	5930	3660	(29.7)		
1.5 m	kg					*9480	*9480	*5700	5150	*4260	3260	*3540	2240	2620	1610	9.10
5.0 ft	lb					*20900	*20900	*12570	11350	*9390	7190	*7800	4940	5780	3550	(29.9)
Ground Line	kg					*8230	*8230	*6680	4820	*4790	3090	3490	2150	2710	1660	8.85
	lb					*18140	*18140	*14730	10630	*10560	6810	7690	4740	5970	3660	(29.0)
-1.5 m	kg	*5980	*5980	*9760	9120	*7020	4670	4890	2990	*2950	2110	3000	1850	8.28		
-5.0 ft	lb	*13180	*13180	*21520	20110	*15480	10300	10780	6590	*6500	4650	6610	4080	(27.2)		
-3.0 m	kg	*8450	*8450	*10130	9180	*6670	4650	*4720	2980					*3270	2300	7.30
-10.0 ft	lb	*18630	*18630	*22330	20240	*14700	10250	*10410	6570					*7210	5070	(24.0)
-4.5 m	kg	*11670	*11670	*8010	*8010	*5360	4770									
-15.0 ft	lb	*25730	*25730	*17660	*17660	*11820	10520									

NOTES

- Lifting capacity is based on SAE J1097, ISO 10567.
- Lifting capacity of the Robex Series does not exceed 75% of tipping load with the machine on firm, level ground or 87% of full hydraulic capacity.

- The load point is a hook (standard equipment) located on the back of the bucket.
- (\*) indicates load limited by hydraulic capacity.

# Lifting Capacities



## Lifting capacities R180LC-7A Hydraulic adjustable boom



Rating over-front



Rating over-side or 360 degree

• Boom : 5.10 m (16' 9") • Arm : 2.20 m (7' 3") • Bucket : 0.76 m<sup>3</sup> (0.99 yd<sup>3</sup>) SAE heaped • Shoe : 600 mm(24") triple grouser with 2,950 kg (6,500 lb) CWT

Load point height m(ft)	Load radius										At max. reach			
	1.5 m(5.0 ft)		3.0 m(10.0 ft)		4.5 m(15.0 ft)		6.0 m(20.0 ft)		7.5 m(25.0 ft)		Capacity		Reach	
													m (ft)	
6.0 m 20.0 ft	kg													
	lb													
4.5 m 15.0 ft	kg													
	lb													
3.0m 10.0 ft	kg													
	lb													
1.5 m 5.0 ft	kg													
	lb													
Ground Line	kg													
	lb													
-1.5 m -5.0 ft	kg													
	lb													
-3.0 m -10.0 ft	kg													
	lb													

• Boom : 5.10 m (16' 9") • Arm : 2.60 m (8' 6") • Bucket : 0.76 m<sup>3</sup> (0.99 yd<sup>3</sup>) SAE heaped • Shoe : 600 mm(24") triple grouser with 2,950 kg (6,500 lb) CWT

Load point height m(ft)	Load radius										At max. reach			
	1.5 m(5.0 ft)		3.0 m(10.0 ft)		4.5 m(15.0 ft)		6.0 m(20.0 ft)		7.5 m(25.0 ft)		Capacity		Reach	
													m (ft)	
6.0 m 20.0 ft	kg													
	lb													
4.5 m 15.0 ft	kg													
	lb													
3.0m 10.0 ft	kg													
	lb													
1.5 m 5.0 ft	kg													
	lb													
Ground Line	kg													
	lb													
-1.5 m -5.0 ft	kg													
	lb													
-3.0 m -10.0 ft	kg													
	lb													
-4.5 m -15.0 ft	kg													
	lb													

NOTES  
 1. Lifting capacity is based on SAE J1097, ISO 10567.  
 2. Lifting capacity of the Robex Series does not exceed 75% of tipping load with the machine on firm, level ground or 87% of full hydraulic capacity.

3. The load point is a hook (standard equipment) located on the back of the bucket.  
 4. (\*) indicates load limited by hydraulic capacity.



### CERES SYSTEM

CERES(Construction Equipment Resource Support) is HHI's new information system on all Hyundai Construction equipment's products for all overseas customer, dealer and branch office.

<http://ceres.hhi.co.kr>



## Lifting capacities R180LCD-7A



Rating over-front



Rating over-side or 360 degree

• Boom : 5.10 m (16' 9") • Arm : 2.20 m (7' 3") • Bucket : 0.76 m<sup>3</sup> (0.99 yd<sup>3</sup>) SAE heaped • Shoe : 600 mm(24") triple grouser with 2,950 kg (6,500 lb) CWT

Load point height m(ft)	Load radius										At max. reach			
	1.5 m(5.0 ft)		3.0 m(10.0 ft)		4.5 m(15.0 ft)		6.0 m(20.0 ft)		7.5 m(25.0 ft)		Capacity		Reach	
													m (ft)	
7.5 m 25.0 ft	kg													
	lb													
6.0 m 20.0 ft	kg													
	lb													
4.5 m 15.0 ft	kg													
	lb													
3.0 m 10.0 ft	kg													
	lb													
1.5 m 5.0 ft	kg													
	lb													
Ground Line	kg													
	lb													
-1.5 m -5.0 ft	kg													
	lb													
-3.0 m -10.0 ft	kg													
	lb													
-4.5 m -15.0 ft	kg													
	lb													

• Boom : 5.10 m (16' 9") • Arm : 2.60 m (8' 6") • Bucket : 0.76 m<sup>3</sup> (0.99 yd<sup>3</sup>) SAE heaped • Shoe : 600 mm(24") triple grouser with 2,950 kg (6,500 lb) CWT

Load point height m(ft)	Load radius										At max. reach			
	1.5 m(5.0 ft)		3.0 m(10.0 ft)		4.5 m(15.0 ft)		6.0 m(20.0 ft)		7.5 m(25.0 ft)		Capacity		Reach	
													m (ft)	
7.5 m 25.0 ft	kg													
	lb													
6.0 m 20.0 ft	kg													
	lb													
4.5 m 15.0 ft	kg													
	lb													
3.0 m 10.0 ft	kg													
	lb													
1.5 m 5.0 ft	kg													
	lb													
Ground Line	kg													
	lb													
-1.5 m -5.0 ft	kg													
	lb													
-3.0 m -10.0 ft	kg													
	lb													
-4.5 m -15.0 ft	kg													
	lb													

• Boom : 5.10 m (16' 9") • Arm : 3.10 m (11' 1") • Bucket : 0.76 m<sup>3</sup> (0.99 yd<sup>3</sup>) SAE heaped • Shoe : 600 mm(24") triple grouser with 2,950 kg (6,500 lb) CWT

Load point height m(ft)	Load radius										At max. reach			
	1.5 m(5.0 ft)		3.0 m(10.0 ft)		4.5 m(15.0 ft)		6.0 m(20.0 ft)		7.5 m(25.0 ft)		Capacity		Reach	
													m (ft)	
7.5 m 25.0 ft	kg													
	lb													
6.0 m 20.0 ft	kg													
	lb													
4.5 m 15.0 ft	kg													
	lb													
3.0 m 10.0 ft	kg													
	lb													
1.5 m 5.0 ft	kg													
	lb													
Ground Line	kg													
	lb													
-1.5 m -5.0 ft	kg													
	lb													
-3.0 m -10.0 ft	kg													
	lb													
-4.5 m -15.0 ft	kg													
	lb													

NOTES  
 1. Lifting capacity is based on SAE J1097, ISO 10567.  
 2. Lifting capacity of the Robex Series does not exceed 75% of tipping load with the machine on firm, level ground or 87% of full hydraulic capacity.

3. The load point is a hook (standard equipment) located on the back of the bucket.  
 4. (\*) indicates load limited by hydraulic capacity.